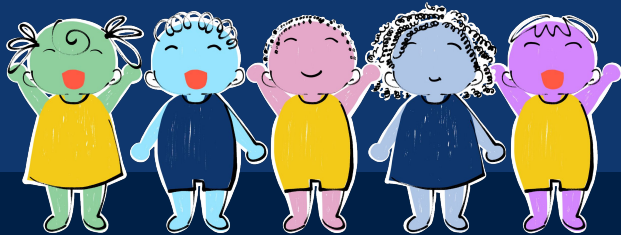




CUSD Funding

Fall 2020



INTRODUCTION

Welcome

We're here today to continue our work to deepen understanding and build partnership with the CUSD community.

The goals for this presentation are:

- 1 Explain the CUSD budget
- 2 Describe actions you can take to support CUSD
- 3 Answer your questions



BUDGET

Budgets reflect our values

What is our desire for our schools?

- High quality programs and resources for students
- District wide equity
- Stability of staff to include teachers, principals, and all classified personnel
- Increase school site budgets
- Strong support functions: grounds, nutrition, maintenance, HVAC, etc.



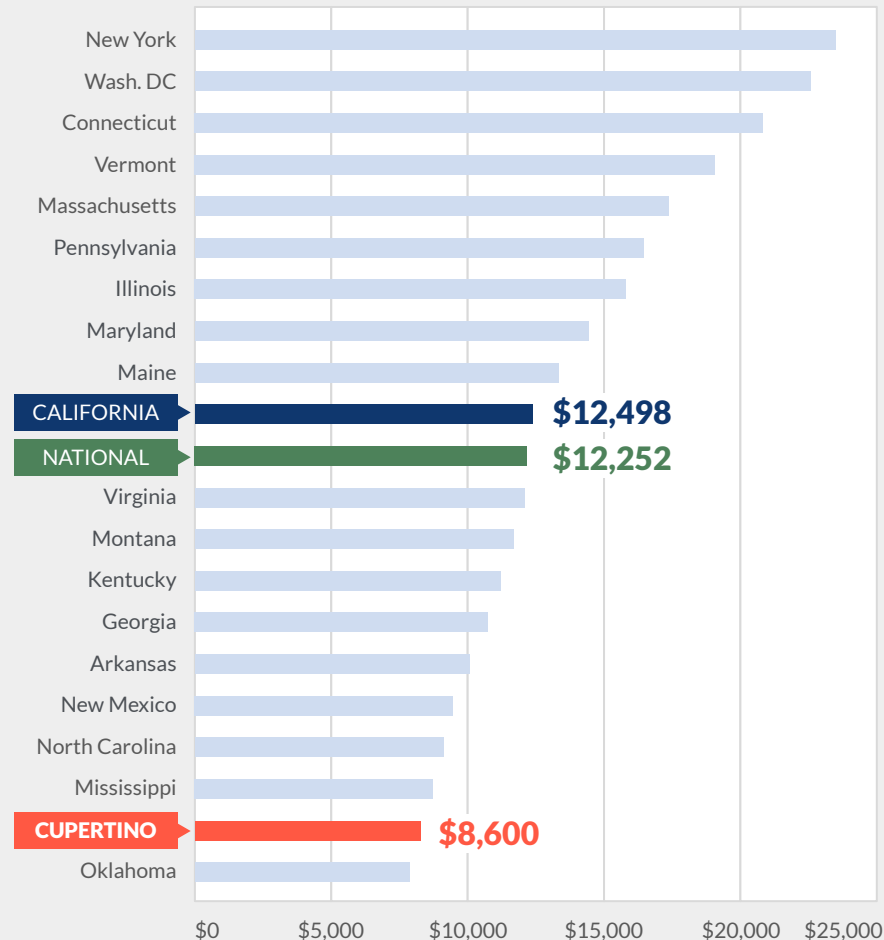
We are low-funded relative to the state and the nation

CUSD is one of the lowest funded* districts compared to National and within California.

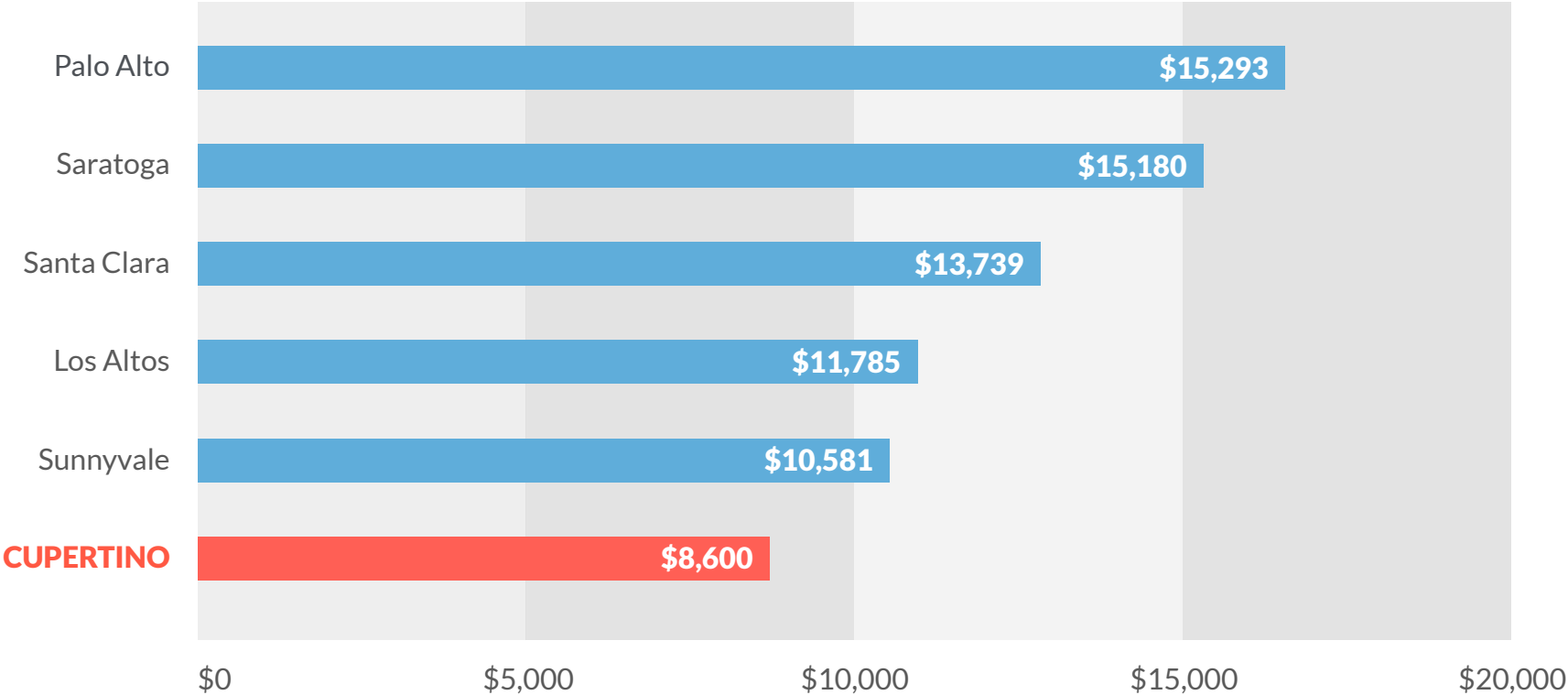
*Per pupil funding



2018 Per Pupil Funding



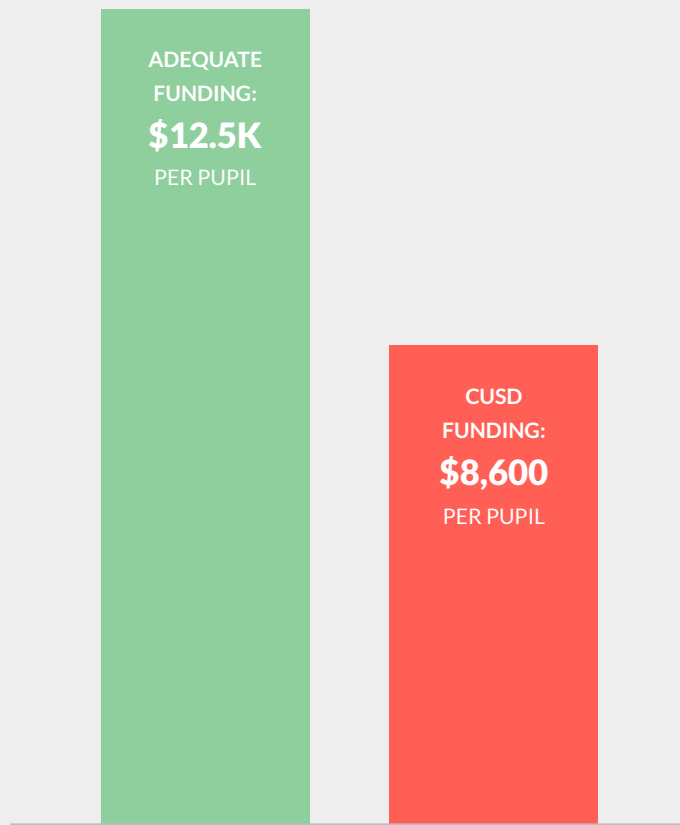
We are low-funded relative to our neighbors



We are low-funded relative to what is considered *adequate*

According to EdSource, CUSD is low funded compared to expert's view of adequate funding per pupil.

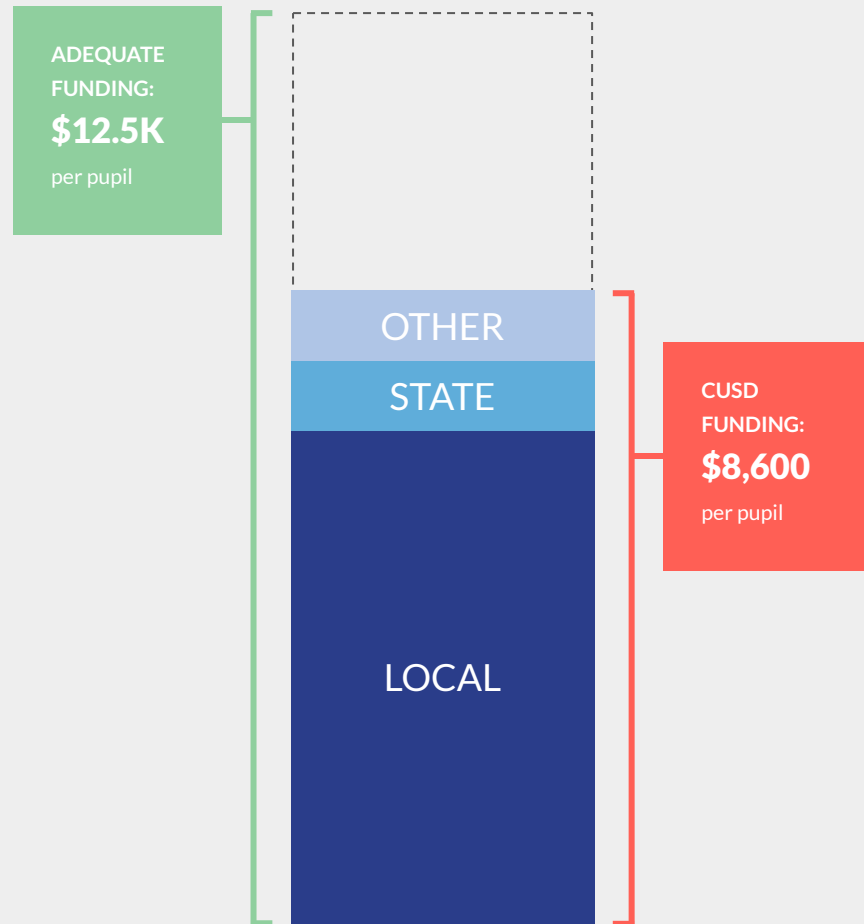
Source: edsources.org



How CUSD is funded

Our Funding Sources

- Local Property Tax Base - 69%
- State Funding - 11%
- Parcel Tax (expiring in June 2023) - 4.7%
- Federal Funding - 1.85%
- Other Funds - 12%
- Private Contributions - 2%



Only a portion of local tax pays for K-8 education

Our local taxes pay for much more than education.

The portion allotted to school districts is split between all local education agencies.



Our funds serve many more pupils

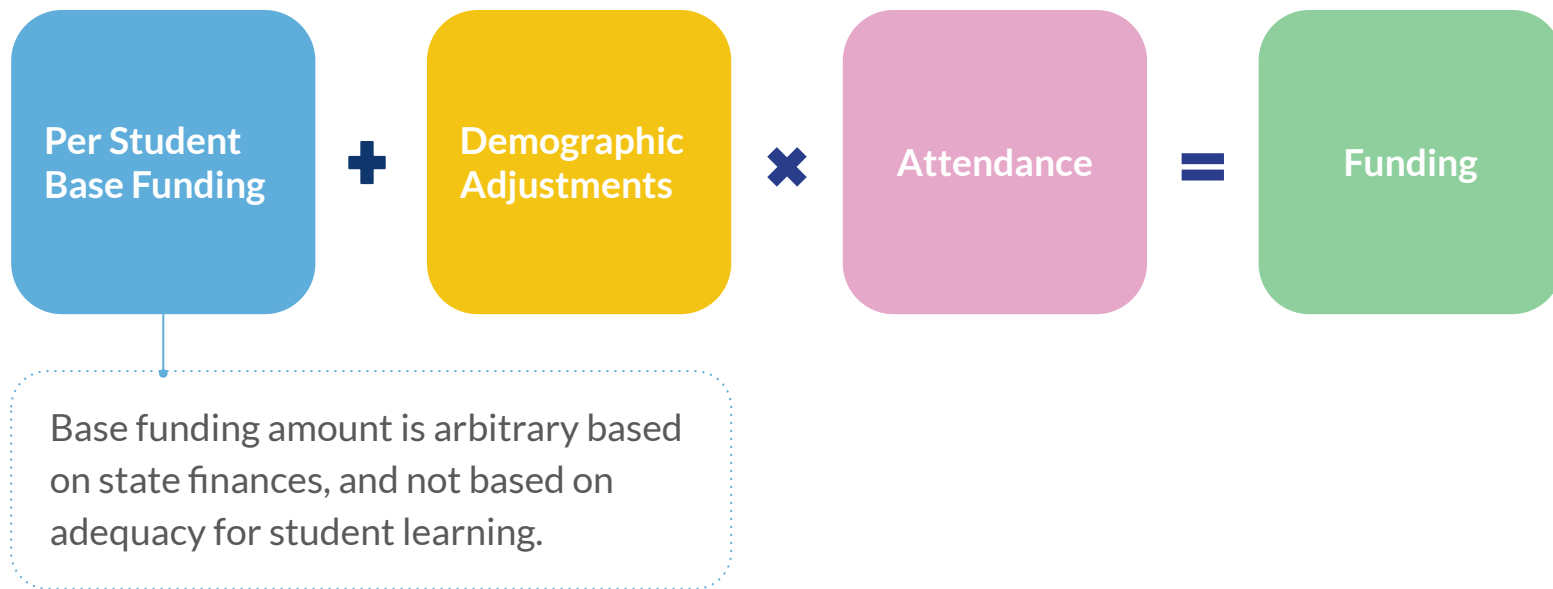
District	Property Tax:	Enrollment per CDE	Per Pupil
Los Altos	\$39,101,031	4,293	\$9,108
Saratoga	\$28,169,291	1,789	\$15,746
Sunnyvale	\$71,876,717	6,672	\$10,773
Santa Clara	\$212,014,674	15,432	\$13,739
Palo Alto	\$183,398,342	11,992	\$15,293
Cupertino	\$120,266,977	16,720	\$7,183

*Funding is measured as dollars Per Pupil (student), CUSD year 2019-20, others 2018-19



Support from the state is determined by LCFF

State Funding Model in CA is called **Local Control Funding Formula (LCFF)**, this formula is applied to all districts.



What it means for our kids

Our current financial outlook is poor

1 We struggle to meet the challenges of:

- Structural deficit in 2023-2024
- Increasing retirement costs
- Increasing healthcare costs
- Increasing operational costs: ~4.5% per year
- Expiring Parcel Tax in 2022-2023: \$8.67 million
- COVID and recession will have a multi-year impact

2 Chronic low funding leads to poor fiscal stability and results in repeated cuts to programs, positions and resources.

We cut to delay, not prevent, insolvency

1 Cuts made in recent years

- Reduced Executive Cabinet position
- Reduced education services/instruction directors & coordinators
- Reduced instruction coaches(teachers)
- Reduced administrative and staff positions in human resources, business services, and grounds & maintenance
- Reduced professional development offerings
- Reduced school site budgets (programs, positions, materials, etc)

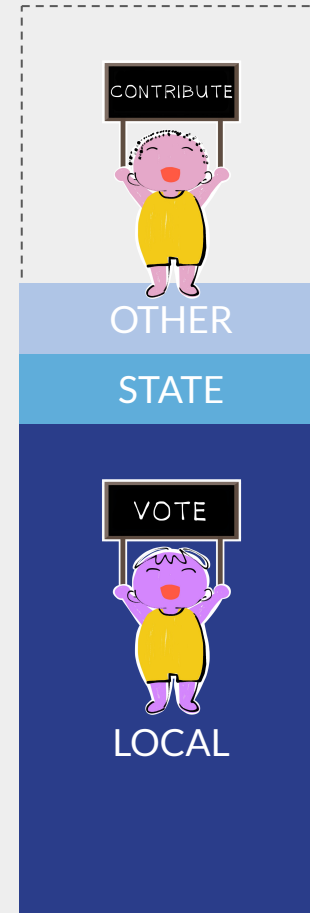
2 Cuts the board must now consider

- Class size increase in elementary and middle
- Elimination or reduction of: Site instructional technology specialist, librarians, secretaries, instructional coaches
- Furlough day(s) and/or Reducing Staff learning days
- Combination of Director/Principal Position and/or Principals covering 2 sites
- School Site and department allocations lowered
- Elementary and/or Middle School closure (pending CAC 10/22 deliverable)

ACTIONS

Take Actions

- Learn
- Vote
- Contribute
- Think Big



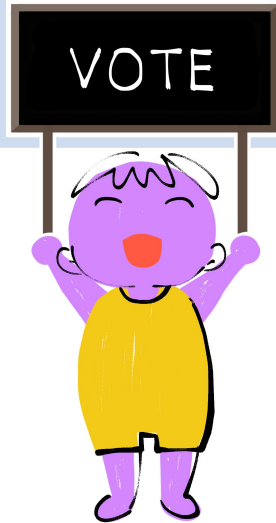
Learn

UNDERSTAND	ACT	LEAD
<ul style="list-style-type: none">• Keep up to date	<ul style="list-style-type: none">• Share this recording• Learn more online• Take the survey	<ul style="list-style-type: none">• Teach and encourage others



Vote

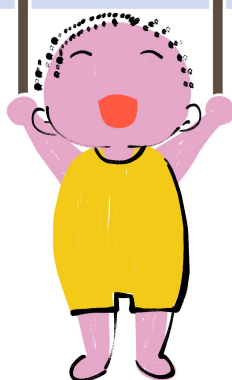
UNDERSTAND	ACT	LEAD
<ul style="list-style-type: none">• Ballot measures are critical• Require a supermajority to pass<ul style="list-style-type: none">○ 66.67% for Parcel○ 55% for Bond	<ul style="list-style-type: none">• VOTE!	<ul style="list-style-type: none">• Volunteer & build support for CUSD Ballot Initiatives• Support your parent org to donate annually to the school ballot initiative campaigns.



Contribute

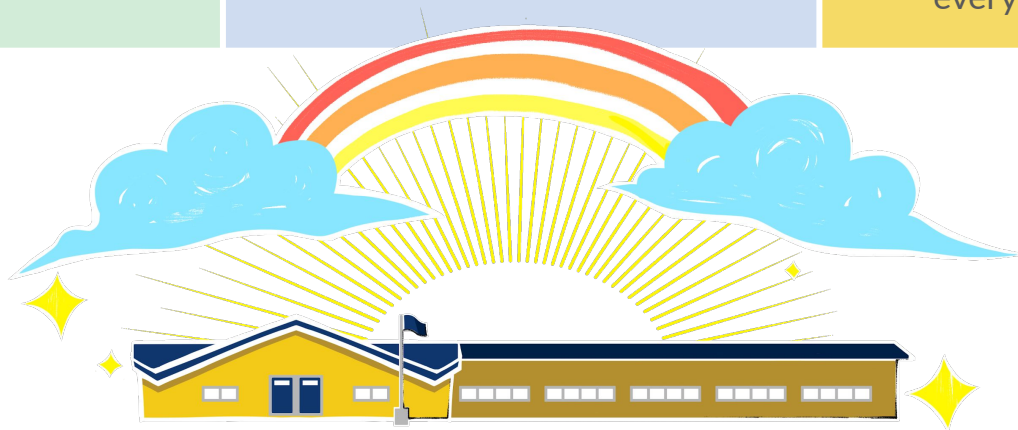
UNDERSTAND	ACT	LEAD
<ul style="list-style-type: none">• Your parent organization is essential to a healthy school community	<ul style="list-style-type: none">• Donate to your site's fundraising organization	<ul style="list-style-type: none">• Volunteer and build support for your parent organization

CONTRIBUTE



Think Big

UNDERSTAND	ACT	LEAD
<ul style="list-style-type: none">• The district is significantly underfunded• The district is the funding source for virtually all of the academic programs at your site	<ul style="list-style-type: none">• Support your site's fundraising organization in its expanded mission to include the CUSD general fund	<ul style="list-style-type: none">• Encourage and support your parent organization to contribute unrestricted funding to CUSD, the budget that pays for nearly everything.



Q & A

25 Minutes

THANK YOU!

- Look for your principal's email distributing this recording
- Learn more at <https://publicschool101.org>
- Stay tuned for a survey
- Send questions to your board: board@cusdk8.org

